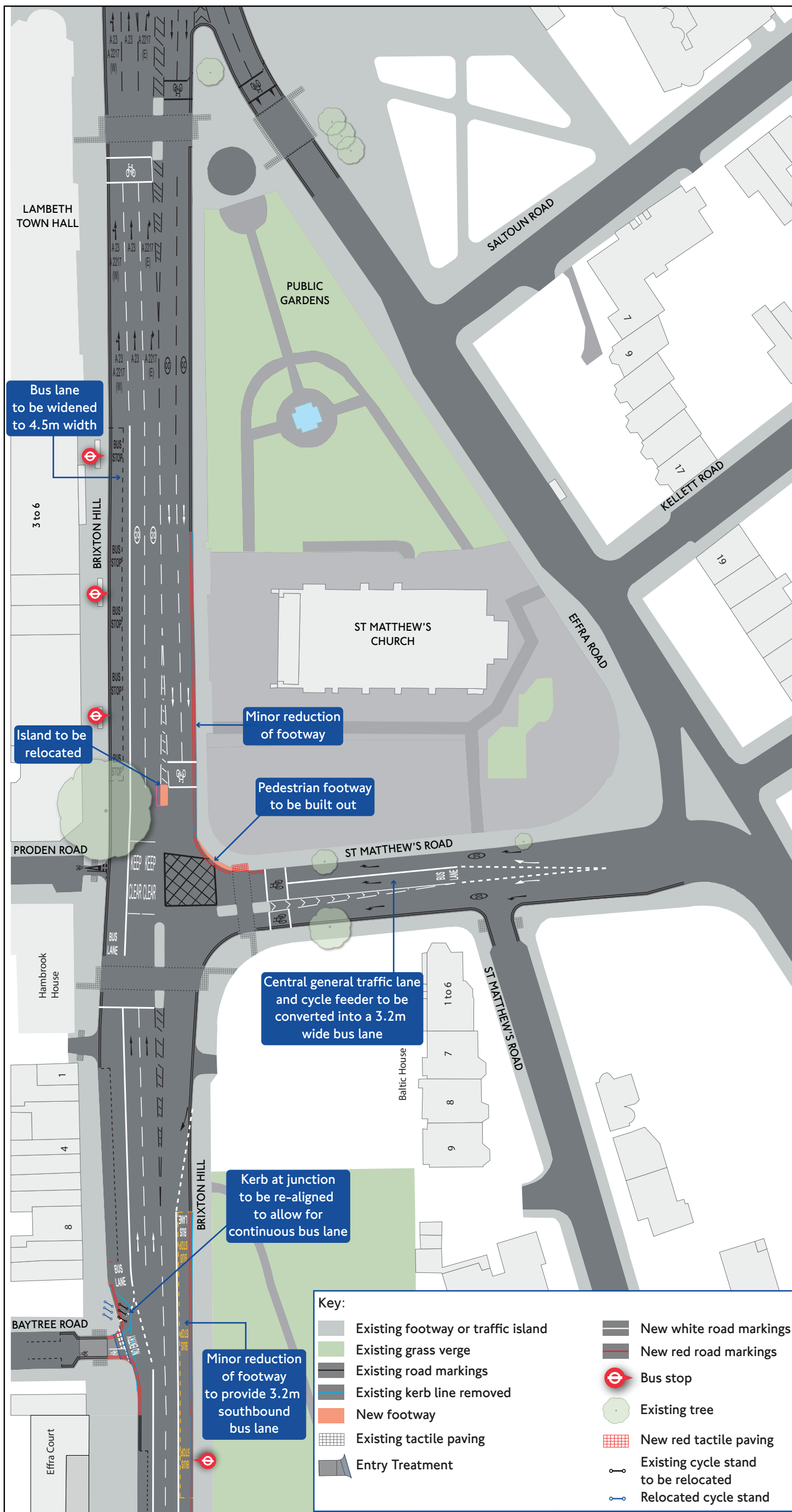


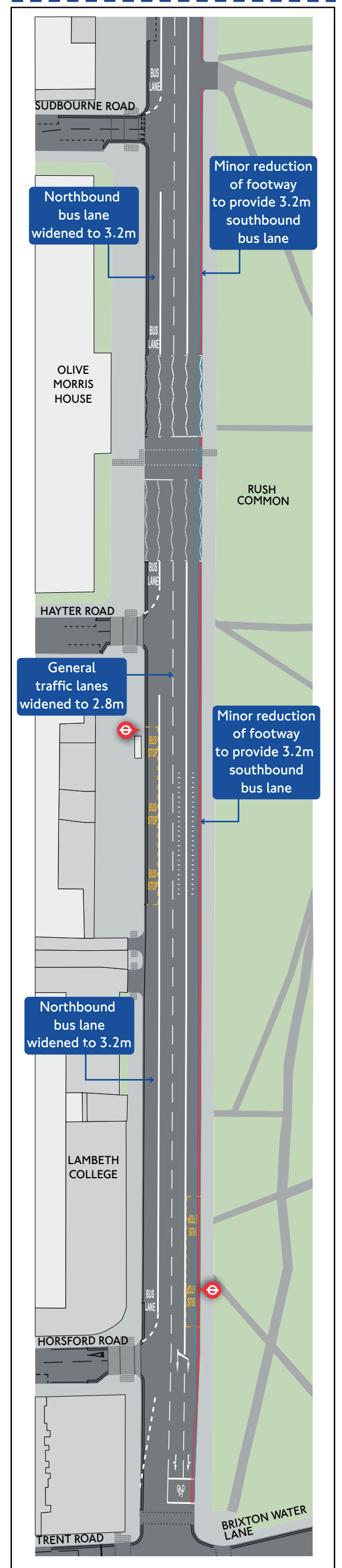


St Matthew's Road Junction with Brixton Hill Bus Priority Scheme



For continuation see right

For continuation see left



For continuation see overleaf

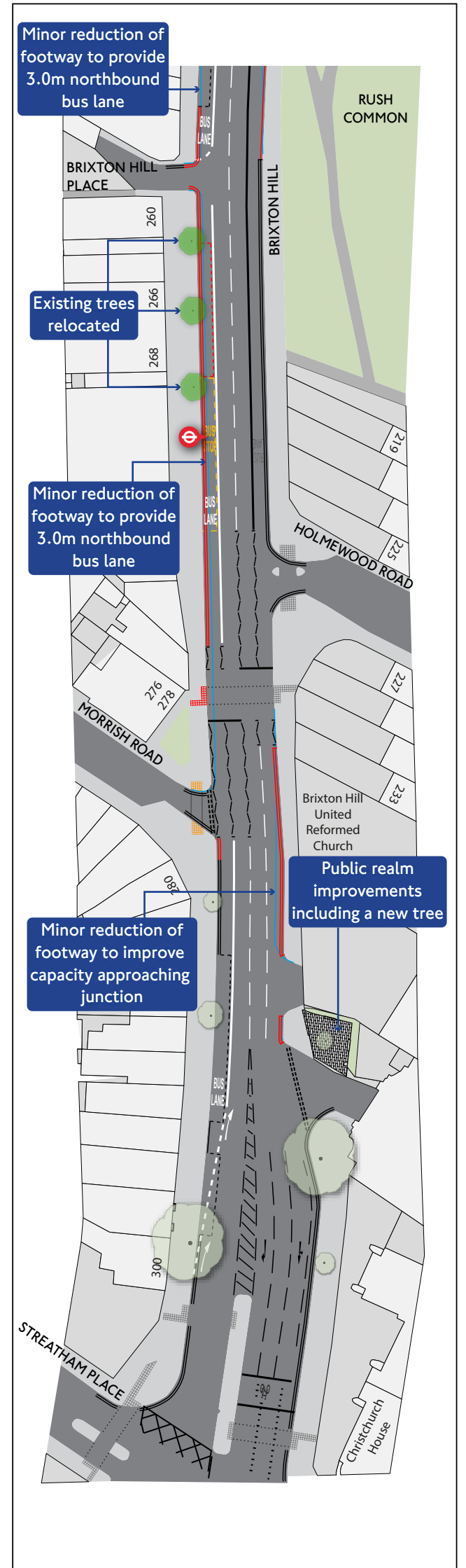
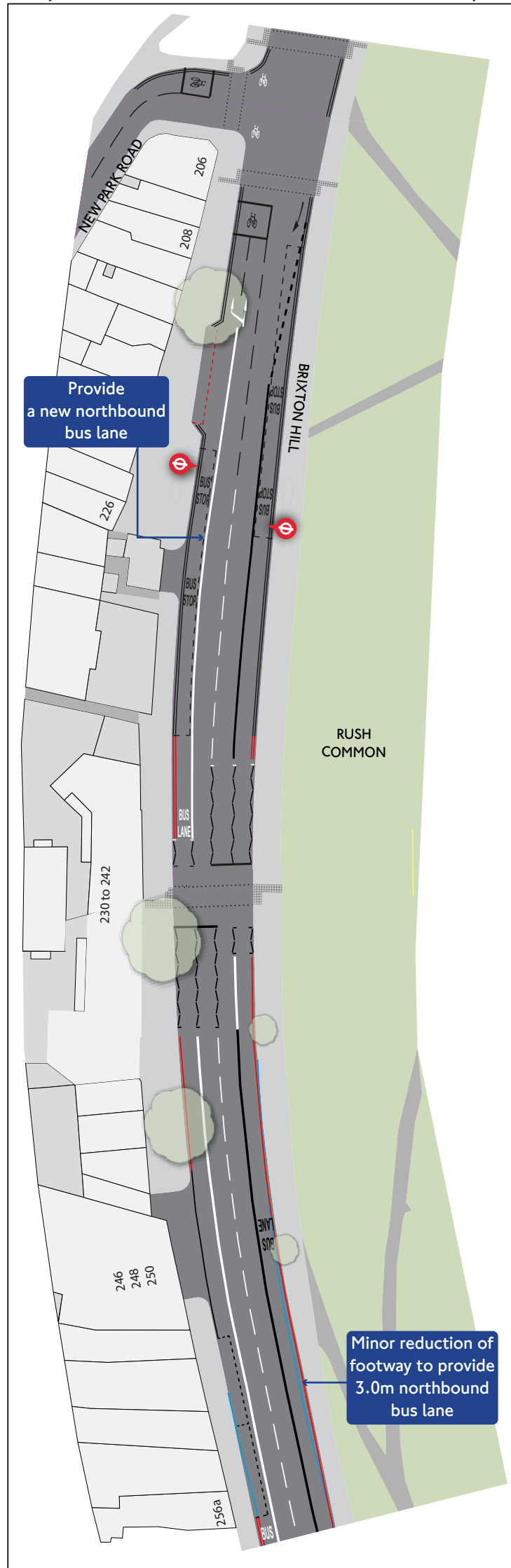
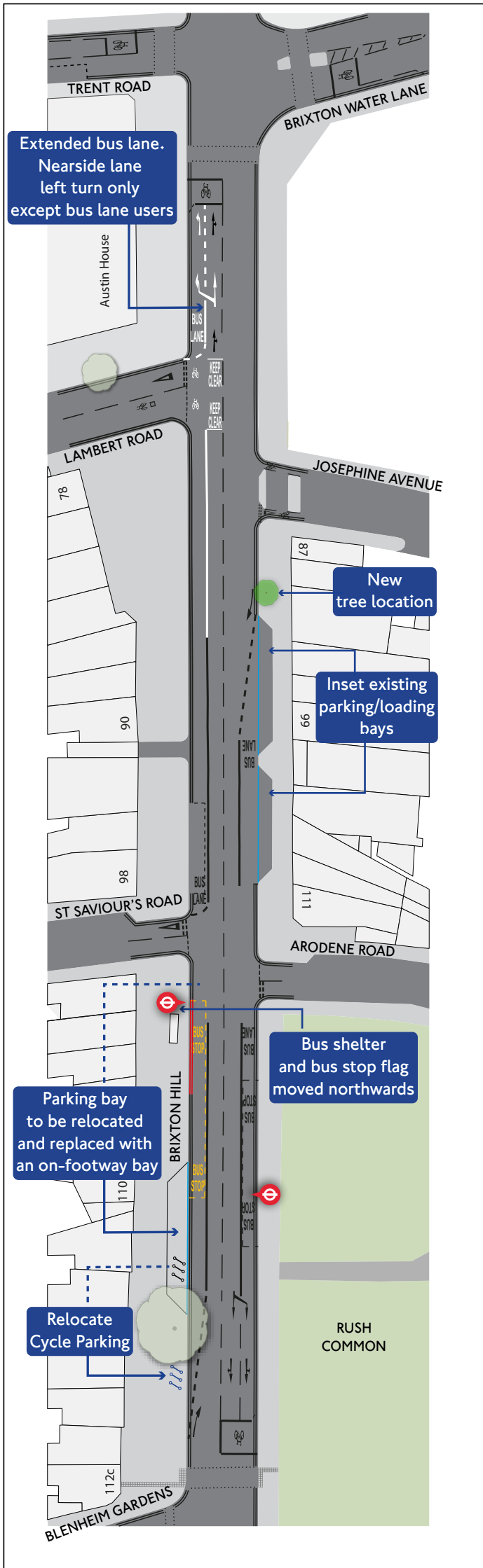


Brixton Hill Proposed Bus Priority Scheme

For continuation see overleaf

Continuing from New Park Road

For continuation see left



For continuation see right

Key:

| | |
|------------------------------------|--------------------------------------|
| Existing footway or traffic island | Existing tactile paving |
| Existing grass verge | New red tactile paving |
| Existing road markings | Existing cycle stand to be relocated |
| Existing kerb line removed | Relocated cycle stand |
| New footway | Existing tree |
| New white road markings | New tree/relocated tree |
| New red road markings | |
| Bus stop | |